

# MONTHLY MEMBERSHIP PROGRESS REPORT

District 13 OH5

Results as of: 6/30/2020

GMT:

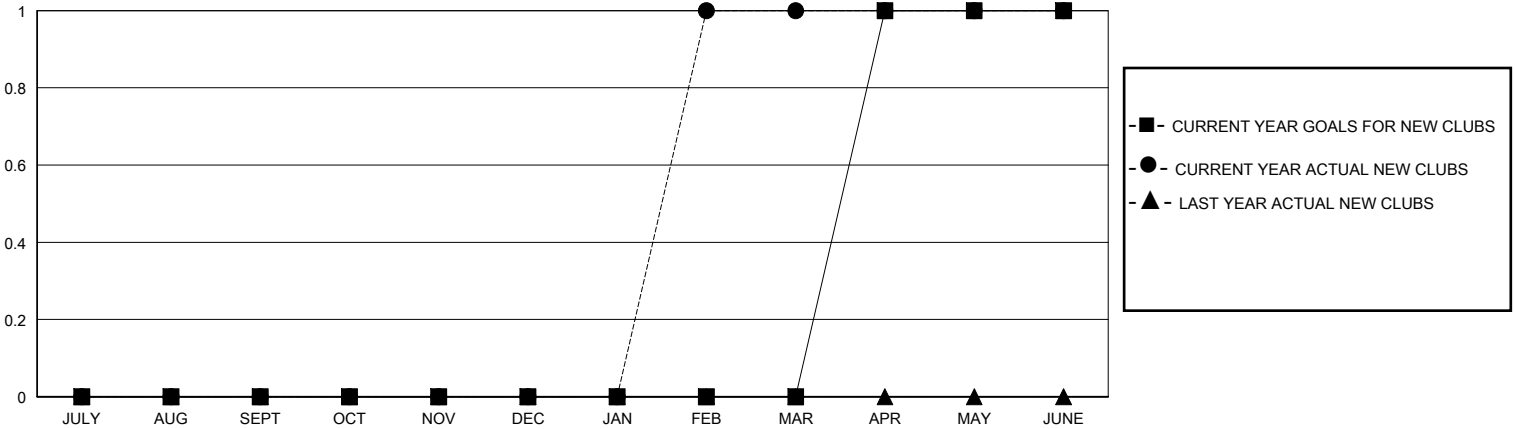
LOCATION OHIO

GMT CA

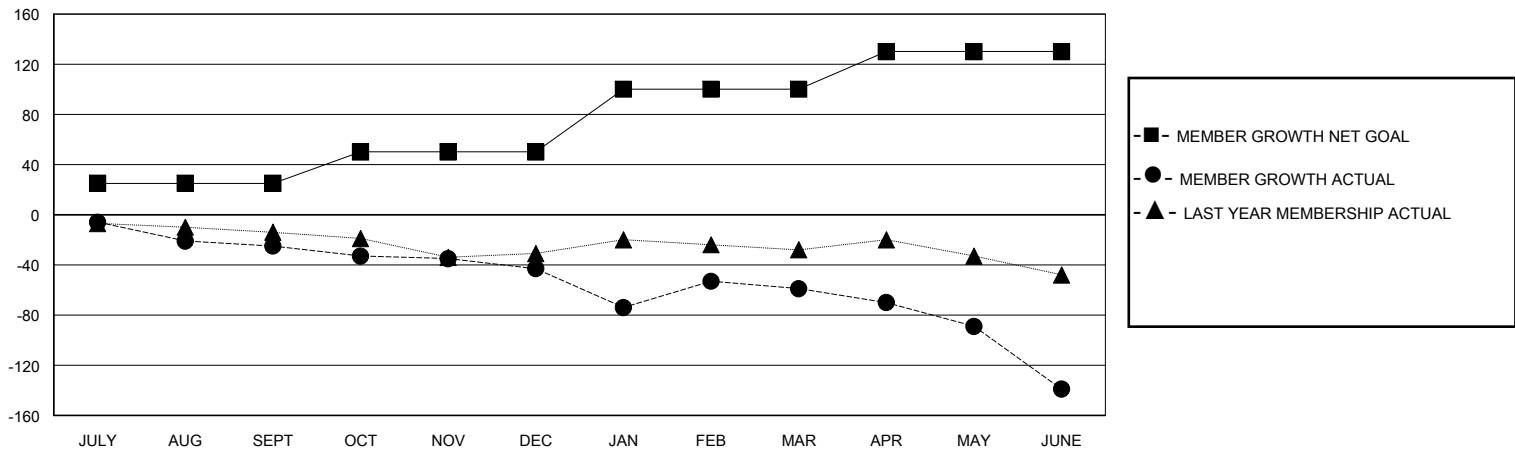
Clubs			
RESULTS FOR 2019-2020			
QUARTER	NEW CLUB GOAL	NEW CLUBS	DROPPED CLUBS
JULY/AUG/SEPT	0	0	0
OCT/NOV/DEC	0	0	0
JAN/FEB/MAR	0	1	2
APR/MAY/JUNE	1	0	1

Members			
RESULTS FOR 2019-2020			
QUARTER	MEMBER GROWTH NET GOAL	MEMBER GROWTH ACTUAL	DROPPED MEMBERS ACTUAL (including transfers)
JULY/AUG/SEPT	25	25	45
OCT/NOV/DEC	25	33	50
JAN/FEB/MAR	50	60	67
APR/MAY/JUNE	30	9	86

GOALS AND ACTUAL NEW CLUBS CUMULATIVE



GOALS AND ACTUAL MEMBERS CUMULATIVE



DROPPED CLUBS: 3

33 CLUBS OF 55 ADDED 1 OR MORE NEW MEMBERS

GENDER DISTRIBUTION

MALE 1,012 (73.39%)  
FEMALE 367 (26.61%)

DROPPED MEMBERS

DECEASED	31
CLUB CANCELLED	16
OTHER	201
<b>TOTAL</b>	<b>248</b>

[CLICK HERE FOR CUMULATIVE MEMBERSHIP DATA](#)

TOTAL FAMILY UNIT MEMBERS	217
FAMILY MEMBERS PAYING HALF DUES	109